



EMA GARP Fund, L.P.

THE FIRM

Equity Management Associates, LLC (EMA), founded in 2006, is a Boston-based investment management firm that invests in public & private equity opportunities.

STRATEGY: "MONETARY DEBASEMENT INSURANCE"

Presently, the fund's strategy is focused on providing "Monetary Debasement Insurance" through investments in Gold & Silver miners and Bitcoin. The objective is to provide long-term total returns in excess of the VanEck Vectors Gold Miners ETF (GDX) as well as the S&P 500.

EMA'S EDGE

Our edge lies in our team's deep knowledge of companies, management teams and risk/reward trade-offs in sizing positions. The Gold mining sector requires active portfolio management as plenty of things can go wrong: poor management, permitting challenges and the general nature of high-fixed operating cost businesses.

EMA IS DIFFERENTIATED

Our fund is differentiated from other funds and mining ETFs GDX and GDJ. Whereas those ETFs will avoid select junior miners and private investments, we take advantage of those growth opportunities through a highly diversified portfolio across the publicly traded mining spectrum.

INVESTMENT TYPES

- Primarily direct investments in public Gold & Silver mining and Bitcoin related companies
- Selective investment in private mining and Bitcoin related companies
- Private placements in public companies subject to four month lock-ups on sale (often with warrants to buy additional shares)

PORTFOLIO STRATIFICATION

Broad Categories		Mining Buckets	% AUM
Gold	55-70%	Producers	20-70%
Silver	20-40%	Developers	5-40%
Bitcoin	5-15%	Drill Stories	5-40%
		Bitcoin related	5-15%

PORTFOLIO MANAGEMENT



Larry Lepard
Partner/PM
• 38 years exp.
• BA: Colgate
• MBA: Harvard Business School



David Foley
Partner
• 23 years exp.
• BA: Providence
• MBA: Harvard Business School

FUND DETAILS

Assets:	US\$40 million
Inception Date:	January 1, 2006
Minimum Investment:	\$1 million
Management/Incentive Fees:	2% / 20% (after 10% hurdle rate)
Liquidity:	1 year lock; then quarterly 25% withdrawal
Administrator:	NAV Fund Administration Group
Prime Broker:	Fidelity Investments
Auditor:	Richey May & Co.

THE FUND'S OPPORTUNITY

Given the high level of Debt/GDP globally, economic and market dislocations are leading to aggressive monetary and fiscal policies. This is creating low to negative real yields. We believe we are in the early innings of a sound money bull market for both precious metals and Bitcoin.

In total, "sound money alternatives" are only 0.9% of Total Global Liquid Financial Assets.⁽¹⁾

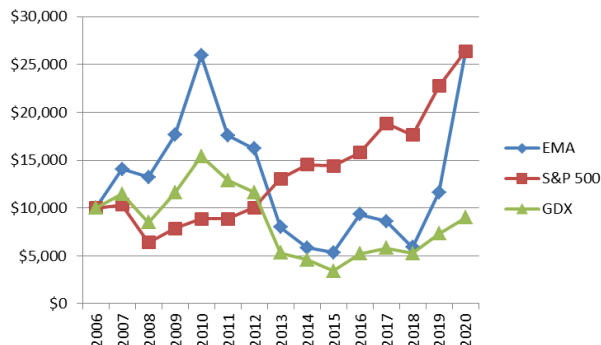
Asset Class (Global)	US Value (Trillion)	% WW Fin. Assets
Tradable Gold Bullion	\$2.4 T	
Publicly Traded Gold Stocks	0.8 T	
Bitcoin @ \$48,500 / coin	0.9 T	
Total Sound Money	\$4.1 T	0.9%
Total WW Financial Assets	\$439.0 T	
Global Real Estate	\$280.6 T	
Total Global Assets	\$719.6T	

There is a lot of room for substitution as holders of legacy financial assets seek sound money alternatives. If only 5 or 10% of those \$439 trillion of global financial assets seek sound money alternatives, it could equate to demand of \$40 trillion vs. sound money supply of only \$4.1 trillion.

(1) Source: www.thevisualcapitalist.com

GROWTH OF \$10,000 INVESTED IN:

EMA GARP FUND VS. S&P 500 AND THE GOLD MINERS ETF (GDX) (1/1/07 - 12/31/20)



PORTFOLIO PERFORMANCE (For period ending 12/31/20)

Annual IRR	1 yr	3 yr	5 yr	10 yr
EMA GARP Fund, L.P.	126.2%	45.1%	37.6%	0.2%
GDX	23.0%	15.7%	21.3%	-5.2%
GDJ	28.3%	16.6%	23.0%	-10.2%
S&P500	16.2%	11.9%	12.9%	11.5%

EMA Garp Fund			
Annual	Return**	GDX	GDJ
2020	126.2%	23.0%	28.3%
2019	97.9%	38.8%	39.8%
2018	-31.8%	-9.3%	-11.5%
2017	-7.8%	11.1%	8.2%
2016	75.0%	52.5%	64.2%
2015	-8.0%	-25.4%	-19.7%
2014	-26.8%	-13.0%	-22.9%
2013	-50.8%	-54.5%	-60.8%
2012	-7.9%	-9.8%	-19.9%
2011	-32.2%	-16.3%	-38.1%
2010	47.1%	33.0%	55.0%
2009	33.2%	36.4%	NA
2008	-5.8%	-26.1%	NA
2007	40.5%	14.8%	NA
2006	19.5%	NA	NA

**Net of fees and incentive allocations

EMA CONTACT INFORMATION

Equity Management Associates, LLC
59 North Main Street
Suite # 1
Sherborn, MA 01770
Tel: (508) 975-4281

<https://www.ema2.com>

Managing Partners

Lawrence W. Lepard (PM) llepard@ema2.com
David A. Foley dfoley@ema2.com

RISK INFORMATION

This Fact Sheet shall not be construed as an offer to sell, or the solicitation of an offer to sell, any securities or services. Any such offering may only be made at the time a qualified investor receives from EMA formal materials describing an offering plus related subscription documentation. There is no guarantee the Fund's investment strategy will be successful. Investing involves risk, and an investment in the Fund could lose money. The strategy is also subject to the following risks: Currency Risk, Non-US Investment Risks, Issuer Specific Risk.